

## Arf6-GTP

**Catalog Number:** 26918

**Gene Symbol:** ARF6

**Description:** Anti-Arf6-GTP Mouse Monoclonal Antibody

**Background:** ARF6 (ADP-ribosylation factor 6) is a member of the ARF super-family. ARF genes encode small GTPases that increase the ADP-ribosyltransferase activity of cholera toxin and are critical for vesicular trafficking as activators of phospholipase D. Arf6 regulates membrane trafficking and functions as a regulatory molecule of phagocytosis.

**Immunogen:** Recombinant full-length protein of active Arf6.

**Tested Applications:** IP, IHC, IF

**Recommended Dilutions:**

IP: 1 µg for 1~2 mg total cellular proteins

IHC, IF: 1:50-1:250

**Concentration:** 1 mg/ml

**Host:** Mouse

**Clonality:** Monoclonal

**Isotype:** IgG

**Purity:** Purified from ascites

**Format:** Liquid

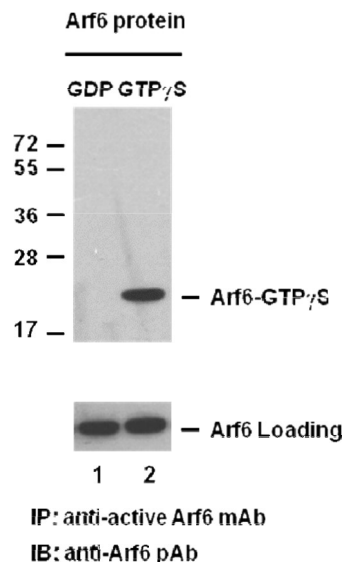
**Preservative:** No

**Constituents:** PBS (without Mg<sup>2+</sup> and Ca<sup>2+</sup>), pH7.4, 150 mM NaCl, 50% glycerol

**Species Reactivity:** Anti-Arf6-GTP antibody recognizes active Arf6 from vertebrates

**Storage Conditions:** Store at -20°C. Avoid repeated freezing and thawing

### Immunoprecipitation and Western blot:



### Arf6 Activation Assay.

Purified full-length Arf6 proteins were immunoprecipitated after treated with GDP (lane left) or GTP $\gamma$ S (lane right). Immunoprecipitation was done with the anti-Arf6-GTP monoclonal antibody (Cat. No. 26918). Immunoblot was with anti-Arf6 polyclonal antibody (Cat. No. 21032).

FOR RESEARCH USE ONLY. NOT FOR DIAGNOSTIC APPLICATIONS